



UL LLC
1075 W Lambert Rd Suite B
Brea, CA 92821

Integrating Sphere Test Report

Relevant Standards
IES LM-79-2008, ANSI C82.77-2002, CIE 13.3-1995
CIE 15-2004, ANSI C78.377-2015, IES TM-30-2015

Prepared For
B-K Lighting Inc
Chris McCarthy
40429 Brickyard Dr
Madera, CA 93636-9515
United States

Catalog Number
APL-LED-L11-3000K
Order Number
11609603
Test Number
11609603.03

Test Date

2017-05-17

Prepared By

Khang Nguyen, Technician

Approved By

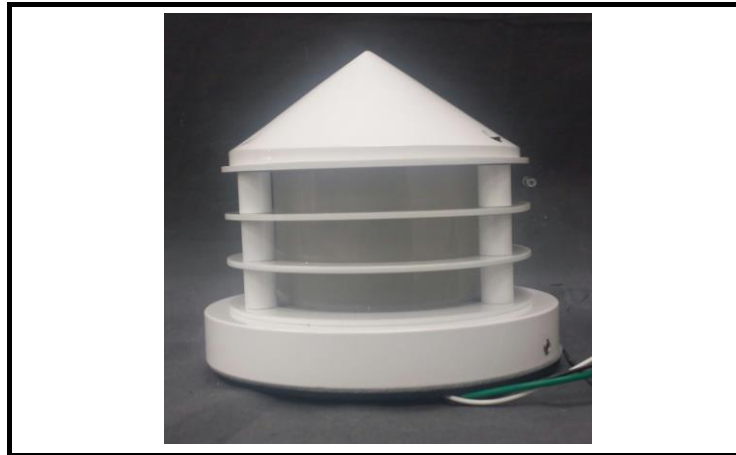
Eric Gaudreau, Senior Engineering Associate

The results contained in this report pertain only to the tested sample.
This report shall not be reproduced, except in full, without written approval of Underwriters Laboratories.
This report must not be used by the client to claim product certification, approval, or endorsement by
NVLAP, NIST, or any agency of the Federal Government.



Luminaire Description: Decorative white metal housing, reflector and diffuse lens.
Lamp: 22 White LEDs
Mounting: Base Down

Luminaire



Summary of Results

Radiant Flux:	1012 mW
Luminous Flux:	288.9 lm
Luminaire Efficacy:	32.0 lm/W
CCT:	3043 K
CRI (Ra):	92.5
Chromaticity (x):	0.4344
Chromaticity (y):	0.4045
Chromaticity (u):	0.2488
Chromaticity (v):	0.3474
Duv:	0.0005

Test Conditions

Test Temperature:	24.3 °C
Voltage:	120.0 VAC
Current:	0.07736 A
Power:	9.031 W
Power Factor:	0.973
Frequency:	60 Hz
Current THD:	18.9 %

Testing was performed in a 2-meter integrating sphere using the 4 π geometry method.
Absorption correction was employed for this measurement.



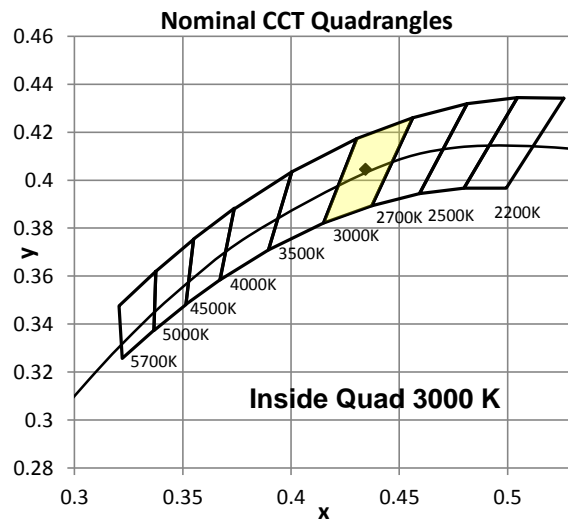
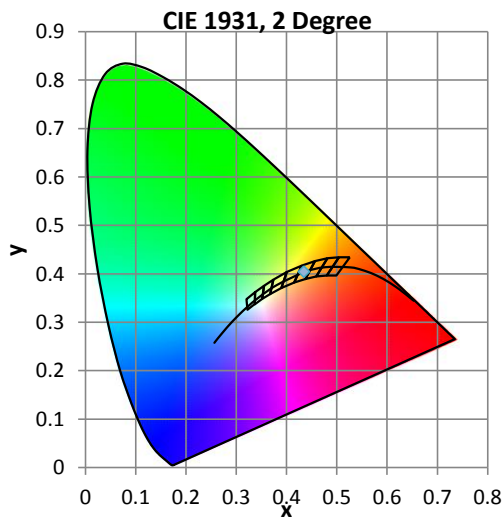
Color Quality - Integrating Sphere

Integrating Sphere Test Conditions

Temperature	Voltage	Current	Power	Power Factor	Frequency	Current THD
24.3 °C	120.0 VAC	0.07736 A	9.031 W	0.973	60 Hz	18.9 %

Summary of Results

Total Output:	289 Lumens	Chromaticity (x):	0.4344
Efficacy:	32.0 lm/w	Chromaticity (y):	0.4045
CCT:	3043 K	Chromaticity (u'):	0.2488
CRI (Ra):	92.5	Chromaticity (v'):	0.5212
CRI (R9):	65.7	TM-30 Rf:	90.7
Peak Wavelength:	625 nm	TM-30 Rg:	100.9
Dominant Wavelength:	582.5 nm	Duv:	0.0005
S/P Ratio:	1.405		



Color Rendering Index Detail

Ra (CRI)	R1	R2	R3	R4	R5	R6	R7	R8	R9	R10	R11	R12	R13	R14
92.5	93.0	94.5	94.2	93.4	92.0	92.5	94.3	85.9	65.7	85.8	93.5	78.4	93.2	96.0

