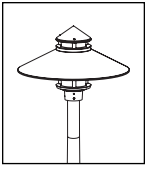


# LARGE BEACON POLE MOUNT

(LBP) - LED



## Standard Installation



Wear Gloves



Flammable



Warning



High Voltage



Hot Surface

### TOOLS NEEDED:



1/16, 3/32", 1/8", & 5/32" Allen Wrench



Waterproof Wire Connectors



**IMPORTANT - WEAR GLOVES TO AVOID GETTING FINGERPRINTS ON THIS PRODUCT. MANY TEKA ILLUMINATION PRODUCTS ARE DESIGNED TO NATURALLY PATINA. OILS FROM YOUR SKIN WILL ACCELERATE THIS PROCESS WHERE TOUCHED AND ARE NEARLY IMPOSSIBLE TO REMOVE. THIS PROCESS OCCURS OVER TIME AND IS DETERMINED BY THE INSTALLATION ENVIRONMENT.**

## INSTRUCTIONS PERTAINING TO A RISK OF FIRE, OR INJURY TO PERSONS IMPORTANT SAFETY INSTRUCTIONS

### Lighted fixture is HOT!

#### **WARNING - To reduce the risk of FIRE OR INJURY TO PERSONS:**

Turn off/unplug and allow to cool before replacing lamp/LED. Fixture gets HOT quickly! Contact only switch/plug when turning on. Do not touch hot lens, guard, or enclosure. Keep fixture away from materials that may burn. Do not operate the luminaire fitting with a missing or damaged shield. Do not touch the source at any time. Use a soft cloth or gloves. Oil from skin may cause damage.

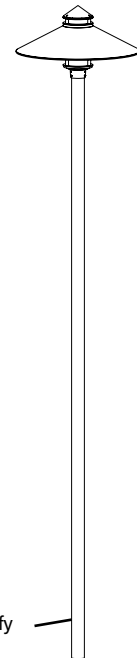
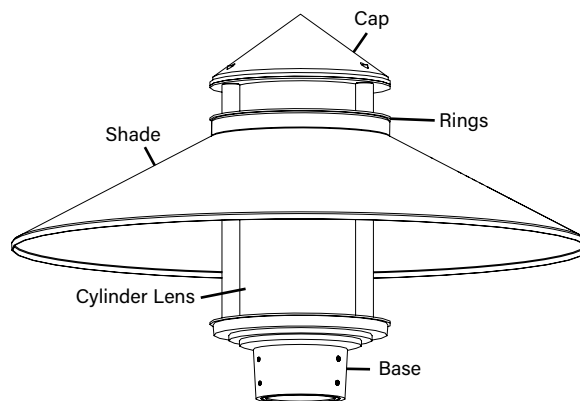
**SAVE THESE INSTRUCTIONS**

## IMPORTANT SAFETY INFORMATION - READ, FOLLOW, AND SAVE ALL SAFETY AND INSTALLATION INSTRUCTIONS

- Product must be installed by a qualified person in a manner consistent with its intended use and in compliance with the National Electrical Code, Canadian Electrical Code, and all Local and Provincial Codes.
- Follow product label information and instructions.
- Qualified Personnel with appropriate personal protective equipment must perform all servicing of this product.
- Before wiring to power supply and during servicing, turn off and lock out power at fuse or circuit breaker before service.
- The use of accessory equipment not recommended by the manufacturer or installed contrary to instructions may cause an unsafe condition. The use of damaged components may cause an unsafe condition and void product warranty.
- Do not block light emanating from product in whole or part, as this may cause an unsafe condition.
- Never operate the fixture with missing or damaged lens. Lens must be cleaned on regular basis.
- Entire fixture may become extremely hot. Do not touch hot lens or fixture body.
- Replace LED assembly only with correct wattage and type of power supply appropriate for LED assembly.
- All gaskets, o-rings and sealing surfaces must be kept clean during installation and service; failure to do this may cause an unsafe condition and void product warranty.

## IMPORTANT LISTINGS AND CERTIFICATIONS

- Suitable for wet locations



## LED LBP (LARGE BEACON POLE)

### POLE TOP INSTALLATION INSTRUCTIONS

3-1/2" O.D. Pole or Pole with 3-1/2" O.D Tenon (Specify Separately - Pole Not Included)

## IMPORTANT SAFETY INFORMATION - READ, FOLLOW, AND SAVE THESE INSTALLATION INSTRUCTIONS

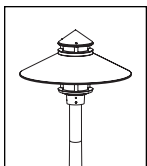
**TEKA** ILLUMINATION

40429 Brickyard Drive • Madera, CA 93636 • USA  
559.438.5800 • FAX 559.438.5900  
www.tekaillumination.com • info@tekaillumination.com

RELEASE DATE  
03/28/2024

DRAWING NUMBER  
INS-2588-00

THIS DOCUMENT CONTAINS PROPRIETARY INFORMATION OF TEKA ILLUMINATION AND ITS RECEIPT OR POSSESSION DOES NOT CONVEY ANY RIGHTS TO REPRODUCE, DISCLOSE ITS CONTENTS, OR TO MANUFACTURE, USE OR SELL ANYTHING IT MAY DESCRIBE. REPRODUCTION, DISCLOSURE OR USE WITHOUT SPECIFIC WRITTEN AUTHORIZATION OF TEKA ILLUMINATION IS STRICTLY FORBIDDEN.



# LARGE BEACON POLE MOUNT

(LBP) - LED

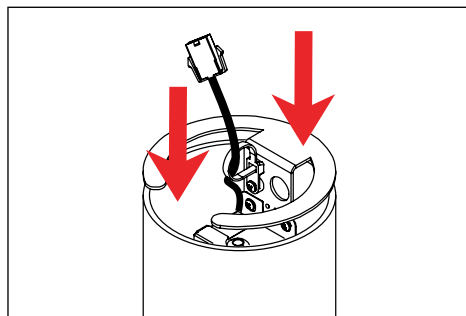
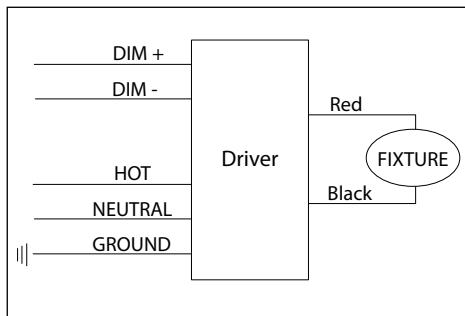
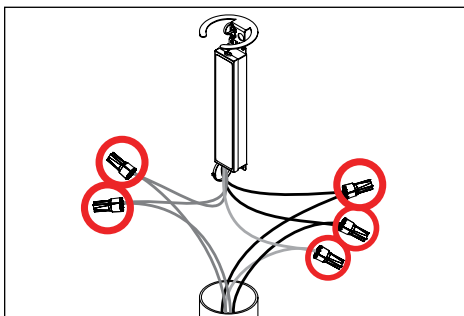
## Standard Installation

### Phase 1 - Install Pole

1. Install 3-1/2" O.D. pole (not included) or pole with 3-1/2" O.D. tenon (not included, Specify Separately) according to lighting plan and manufacturer's installation instructions. Install conduit to be used with this product.
2. Pull primary branch circuit wiring necessary for installation. Pull incoming dimming controls necessary for installation.

**⚠ Leave sufficient wire length in the pole for future service.**

### Phase 2 - Fixture Installation (Pole Top Option)

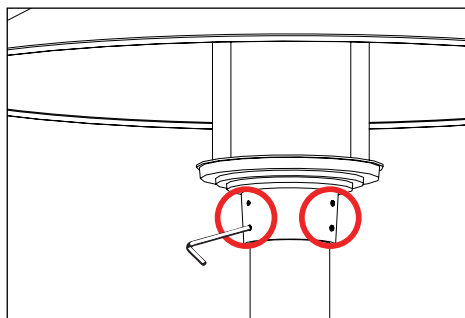
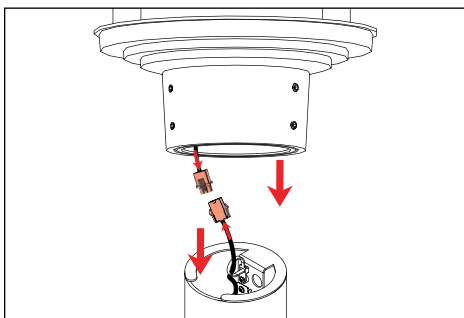


1. Pull primary branch circuit wiring up to driver bracket location at top of pole. Pull incoming dimming controls to top of pole. Feed through strain relief.

#### WIRING DIAGRAM

2. Make watertight connections from primary branch circuit to driver leads using waterproof wire connectors (not included). Connect green ground wire to ground wiring from driver. Connect incoming dimming controls to driver primary side dimming controls. Secondary side is connected via quick disconnect. **See wiring diagram.**

3. Place connections and driver on bracket into pole. Rest bracket on pole top or tenon.



4. Make secondary connections via quick disconnect from driver secondary side to fixture secondary side.

5. Slide fixture over pole top. Secure with six (6) 1/4-20 socket head set screws using a 1/8" allen wrench. Make sure the fixture is completely seated. Do not overtighten.

**IMPORTANT SAFETY INFORMATION LISTED ON REVERSE  
READ, FOLLOW, AND SAVE ALL SAFETY AND INSTALLATION INSTRUCTIONS**



**TEKA** ILLUMINATION

40429 Brickyard Drive • Madera, CA 93636 • USA  
559.438.5800 • FAX 559.438.5900  
www.tekaillumination.com • info@tekaillumination.com

RELEASE DATE  
03/28/2024

REFERENCE NUMBER  
INS-2475-00