



UL LLC  
1075 W Lambert Rd Suite B  
Brea, CA 92821

## Integrating Sphere Test Report

Relevant Standards  
IES LM-79-2008, ANSI C82.77-2002, CIE 13.3-1995  
CIE 15-2004, ANSI C78.377-2015, IES TM-30-2015

Prepared For  
**B-K Lighting Inc**  
Chris McCarthy  
40429 Brickyard Dr  
Madera, CA 93636-9515  
United States

Catalog Number  
**APL-LED-L10-2700K**  
Order Number  
11609603  
Test Number  
11609603.01

Test Date

2017-05-17

Prepared By

Khang Nguyen, Technician

Approved By

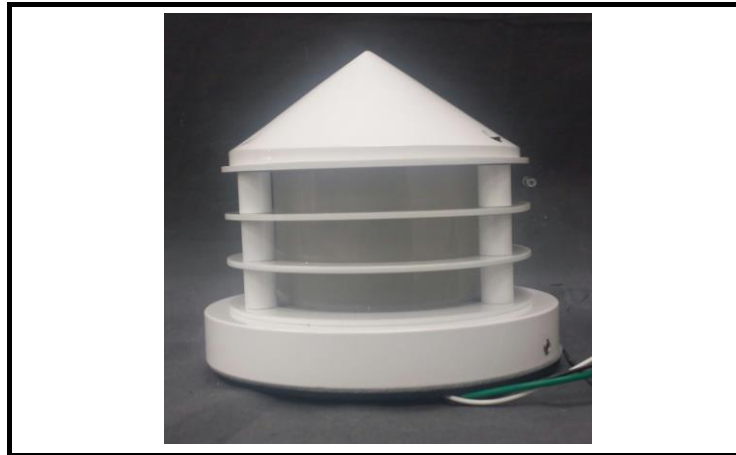
Eric Gaudreau, Senior Engineering Associate

The results contained in this report pertain only to the tested sample.  
This report shall not be reproduced, except in full, without written approval of Underwriters Laboratories.  
This report must not be used by the client to claim product certification, approval, or endorsement by  
NVLAP, NIST, or any agency of the Federal Government.



**Luminaire Description:** Decorative white metal housing, reflector and diffuse lens.  
**Lamp:** 22 White LEDs  
**Mounting:** Base Down

**Luminaire**



**Summary of Results**

Radiant Flux:	1060 mW
Luminous Flux:	290.5 lm
Luminaire Efficacy:	29.7 lm/W
CCT:	2682 K
CRI (Ra):	94.3
Chromaticity (x):	0.4580
Chromaticity (y):	0.4053
Chromaticity (u):	0.2637
Chromaticity (v):	0.3500
Duv:	-0.0022

**Test Conditions**

Test Temperature:	25.0 °C
Voltage:	120.0 VAC
Current:	0.08394 A
Power:	9.790 W
Power Factor:	0.972
Frequency:	60 Hz
Current THD:	19.5 %

Testing was performed in a 2-meter integrating sphere using the 4 $\pi$  geometry method.  
Absorption correction was employed for this measurement.



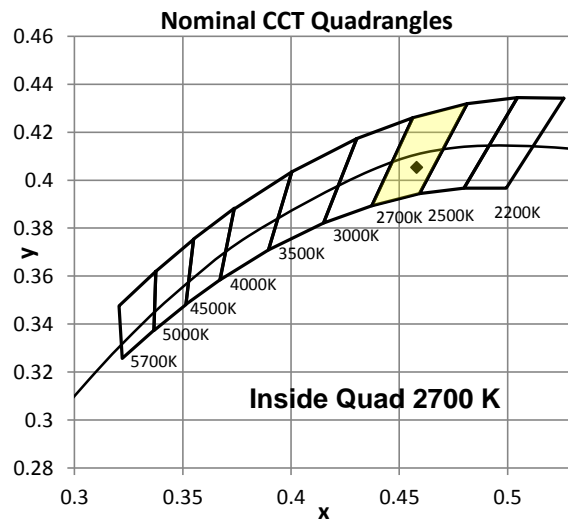
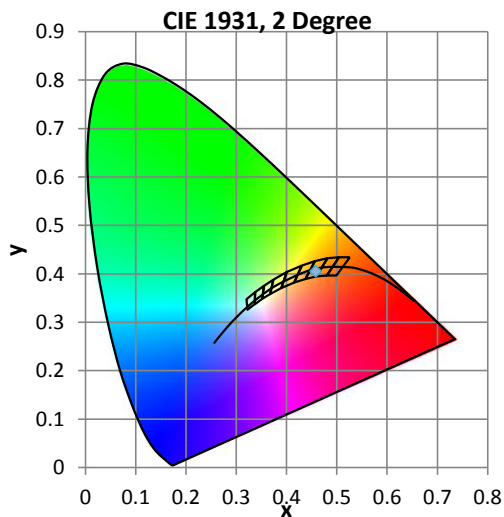
## Color Quality - Integrating Sphere

### Integrating Sphere Test Conditions

Temperature	Voltage	Current	Power	Power Factor	Frequency	Current THD
25.0 °C	120.0 VAC	0.08394 A	9.790 W	0.972	60 Hz	19.5 %

### Summary of Results

Total Output:	291 Lumens	Chromaticity (x):	0.4580
Efficacy:	29.7 lm/w	Chromaticity (y):	0.4053
CCT:	2682 K	Chromaticity (u'):	0.2637
CRI (Ra):	94.3	Chromaticity (v'):	0.5250
CRI (R9):	67.8	TM-30 Rf:	91.4
Peak Wavelength:	629.4 nm	TM-30 Rg:	100.7
Dominant Wavelength:	584.9 nm	Duv:	-0.0022
S/P Ratio:	1.291		



### Color Rendering Index Detail

Ra (CRI)	R1	R2	R3	R4	R5	R6	R7	R8	R9	R10	R11	R12	R13	R14
94.3	95.2	97.9	98.1	94.3	94.9	96.9	92.4	84.7	67.8	93.5	95.1	85.7	96.2	98.1

