



UL LLC
1075 W Lambert Rd Suite B
Brea, CA 92821

Integrating Sphere Test Report

Relevant Standards
IES LM-79-2008, ANSI C82.77-2002, CIE 13.3-1995
CIE 15-2004, ANSI C78.377-2015, IES TM-30-2015

Prepared For
B-K Lighting Inc
Chris McCarthy
40429 Brickyard Dr
Madera, CA 93636-9515
United States

Catalog Number
TWB-LED-X80
Order Number
12099780
Test Number
12099780.01

Test Date

2017-12-20

Prepared By

Luis Torres, Technician

Approved By

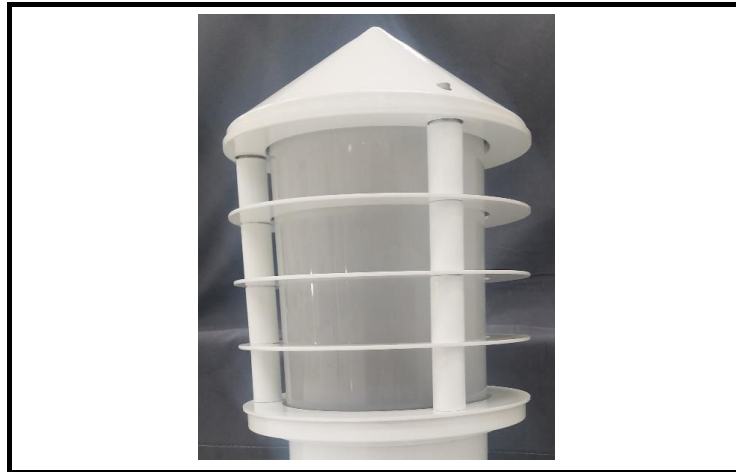
Eric Gaudreau, Senior Engineering Associate

The results contained in this report pertain only to the tested sample.
This report shall not be reproduced, except in full, without written approval of Underwriters Laboratories.
This report must not be used by the client to claim product certification, approval, or endorsement by
NVLAP, NIST, or any agency of the Federal Government.



Luminaire Description: Decorative white metal housing with louvers and frosted lens
Lamp: One (1) white LED
Mounting: Post
Ballast/Driver: One (1) ECOdrive 261/S

Luminaire



Summary of Results

Radiant Flux:	2508 mW
Luminous Flux:	810.2 lm
Luminaire Efficacy:	74.4 lm/W
CCT:	2739 K
CRI (Ra):	82.5
Chromaticity (x):	0.4584
Chromaticity (y):	0.4132
Chromaticity (u):	0.2604
Chromaticity (v):	0.3521
Duv:	0.0009

Test Conditions

Test Temperature:	24.8 °C
Voltage:	120.0 VAC
Current:	0.09228 A
Power:	10.89 W
Power Factor:	0.984
Frequency:	60 Hz
Current THD:	14.8 %

Testing was performed in a 2-meter integrating sphere using the 4 π geometry method.
Absorption correction was employed for this measurement.



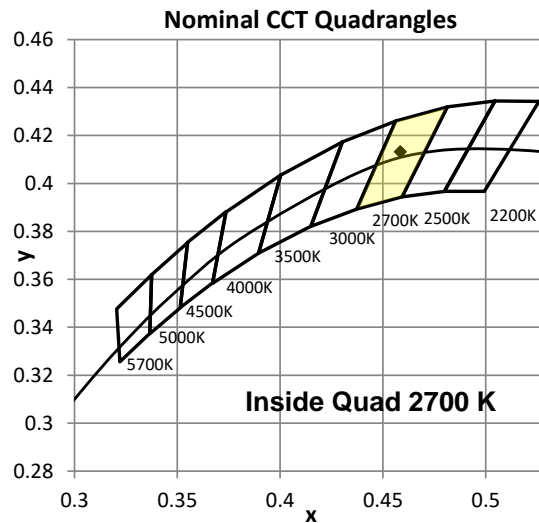
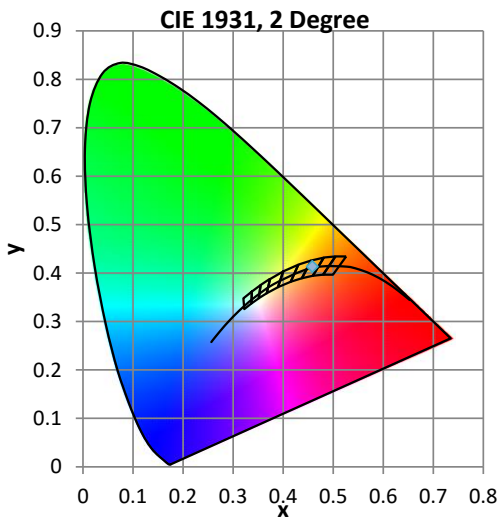
Color Quality - Integrating Sphere

Integrating Sphere Test Conditions

Temperature	Voltage	Current	Power	Power Factor	Frequency	Current THD
24.8 °C	120.0 VAC	0.09228 A	10.89 W	0.984	60 Hz	14.8 %

Summary of Results

Total Output:	810 Lumens	Chromaticity (x):	0.4584
Efficacy:	74.4 lm/w	Chromaticity (y):	0.4132
CCT:	2739 K	Chromaticity (u'):	0.2604
CRI (Ra):	82.5	Chromaticity (v'):	0.5281
CRI (R9):	9.2	TM-30 Rf:	83.6
Peak Wavelength:	607.2 nm	TM-30 Rg:	94.3
Dominant Wavelength:	583.7 nm	Duv:	0.0009
S/P Ratio:	1.237		



Color Rendering Index Detail

Ra (CRI)	R1	R2	R3	R4	R5	R6	R7	R8	R9	R10	R11	R12	R13	R14	R15
82.5	81.0	91.8	95.6	79.7	81.1	90.8	82.1	58.2	9.2	81.7	78.9	73.8	83.5	98.2	73.3

